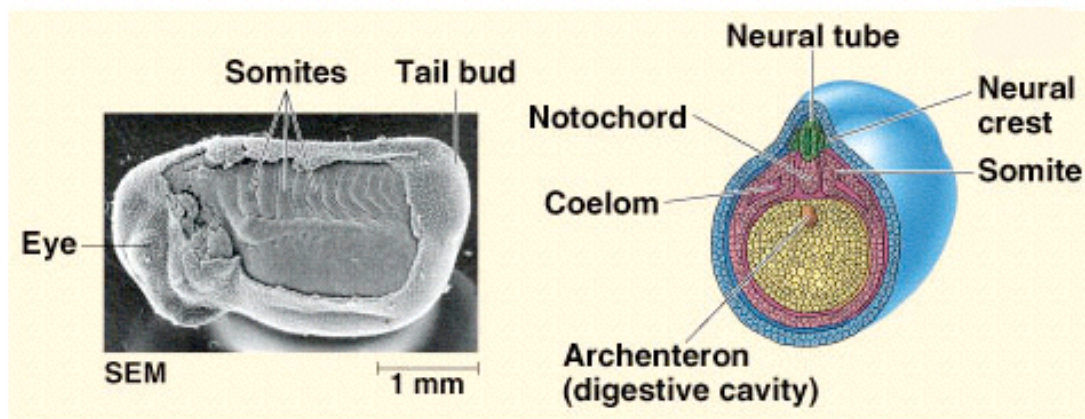


Somite Development

Somites, sometimes called paraxial mesoderm, are segments or blocks of mesoderm that form lateral to the notochord. Somites are arranged serially along both sides of a developing embryo and each somite can be divided into three regions from lateral to medial - the dermatome, sclerotome, and myotome. The superficial dermatome gives rise to the dermis, the deep layers of the skin. The middle layer, the sclerotome, gives rise to the vertebral column. Finally, the inner-most layer, the myotome, gives rise to skeletal muscles and the bones of the appendages.



(c) Somites

Fig. 47-11c from Campbell, 6th ed. Note the somites in the lateral view of the embryo shown above right.





Fig. 47-13 from Campbell, 6th ed. Note the serially arranged developing somites along the embryo's body.

[Download](#) Printable (PDF) Version

[Back to Main Menu](#) / [Previous Objective](#) / [Next Objective](#) /